



ABSOLUTE
PROPERTY

Sopers House, Soper Road, Cuffley EN6 4RY

☎ 020 8882 8156 📠 020 8882 8155

✉ info@absolutepropertyagents.com

🌐 www.absolutepropertyagents.com



15 Watkin Road, Kent
CT19 5ER
£1,600 PCM

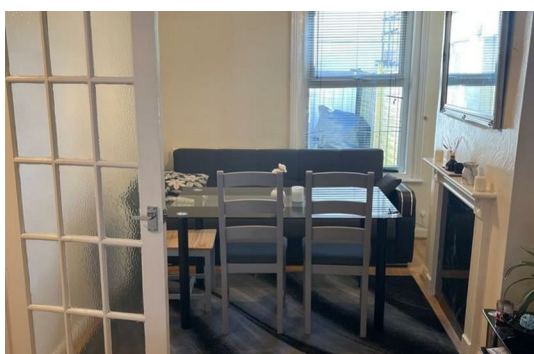
Absolute property are delighted to offer this four-bedroom terraced family home situated in a convenient residential location. This attractive property offers generous living accommodation throughout, making it ideal for families or professional tenants seeking comfortable and versatile living space.

The ground floor comprises a bright and welcoming reception room, a fitted kitchen with ample storage and workspace, and access to a private rear garden, perfect for outdoor dining and entertaining.

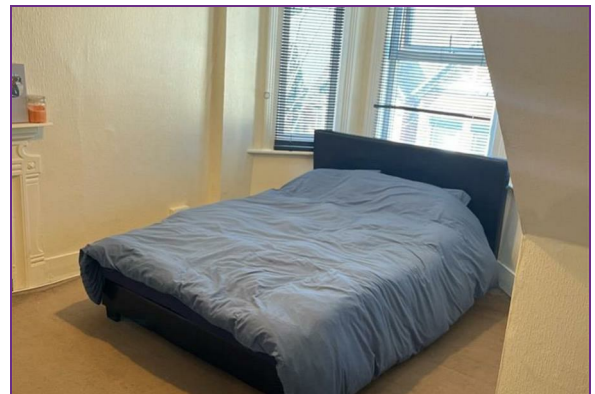
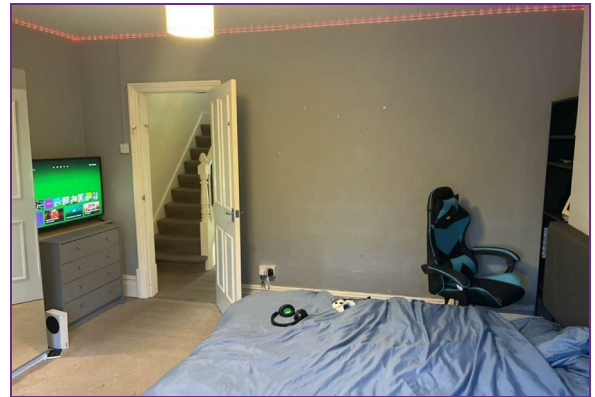
Additional benefits include double glazing, gas central heating, and a practical layout designed for modern family living.

Conveniently located close to local amenities, schools, transport links, and shopping facilities, the property provides excellent access to the surrounding area while remaining within a popular residential setting.

Early viewing is highly recommended.



15 Watkin Road, Kent
CT19 5ER



Energy Efficiency Rating		Environmental Impact (CO ₂) Rating	
Current	Potential	Current	Potential
202-255 D	80	202-255 D	80
177-201 B		177-201 B	
152-176 C		152-176 C	
127-151 D		127-151 D	
102-126 E		102-126 E	
77-101 F		77-101 F	
52-76 G		52-76 G	

For energy efficiency: higher rating, lower costs
 For environmental impact: higher rating, lower CO₂ emissions

England & Wales EPC Directive 2002/91/EC
 England & Wales EPC Directive 2002/91/EC